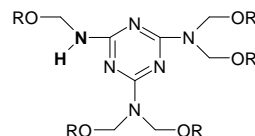


## CHARACTERISTICS

Pentamethoxymethyl/n-butyl melamine formaldehyde resin

## STRUCTURE



## FORM OF DELIVERY

97% in n-Butanol

## SPECIFICATION

Determined per batch

### Property

#### Viscosity DIN EN ISO3219-B

Cone & Plate (23°C) [CPS] 2550-7650  
(435-1061)

Gardner-Holdt 25°C Z - Z3  
(435-1200-3)

#### Non-Volatile Matter/ Solids

Foil, 45min at 45°C [%] 97  
(435-1200-19)

#### Solvent Tolerance (Iso-octane)

(435-1200-25-6) [ml/g] 2.0 min.

#### Color, APHA

(435-1019) 30 max.

#### Haze, APHA

(435-1019) 5 max.

#### Density (Liquids)

(435-1200-30) at 25°C LB./Gal. 9.4-9.6

#### Formaldehyde Content (Sulfite)

(435-1205) [%] 0.15 max.

Not continually determined

#### Degree of polymerisation, DP

(GPC/PS I) 1.7

#### Flash Point (Pensky Martens)

analog, DIN EN 22719 [°F] 150  
[°C] 65,6

## USES :









For CE 2202, at conventional cure temperatures, use of a strong acid catalyst is suggested. A blocked catalyst will enhance the stability of the coating formulation. To minimize cure temperature, an unblocked strong acid catalyst is required. It should be added just prior to use to prevent pot life instability. Resimene CE 2202 can be used in anodic electrodeposition coatings (incl. Ultrafiltration)

## STORAGE STABILITY:

At temperatures up to 25°C the storage stability of Resimene CE 2202 packed in original containers amounts to at least 24 months. Some turbidity may occur in isolated cases but this has no effect on product quality.



# INEOS Melamines

	<b>World Area</b>		<b>Customer Order</b>	<b>Technical Support</b>
<b>INEOS Melamines, Inc.</b> 1395 S. Marietta Parkway Bldg. 500, Suite 210 Marietta, GA 30067	North America		+1 888 723 2873	+1 413 730 2757
			+1 770 528 6693	+1 413 730 3444
	South America		+1 678 999 3172	+1 413 730 2757
			+1 770 528 6693	+1 413 730 3444
<b>INEOS Melamines GmbH</b> Alt Fechenheim 34 D 60386 Frankfurt, Germany  <a href="http://www.ineosmelamines.com">www.ineosmelamines.com</a>	Europe-Africa		+49 (0) 69 4109 2319	+49 (0) 69 4109 2310
			+49 (0) 69 4109 2552	+49 (0) 69 4109 2628
	Asia Pacific		+49 (0) 69 4109 2319	+49 (0) 69 4109 2310
			+49 (0) 69 4109 2552	+49 (0) 69 4109 2628

NOTICE: Although the information and recommendations set forth herein (hereinafter "Information") are presented in good faith and believed to be correct as of the date hereof, Ineos Melamines Inc. (and its subsidiaries) makes no representations or warranties as to the completeness or accuracy thereof. Information is supplied upon the condition that the persons receiving same will make their own determination as to the suitability for their purpose prior to use. In no event will Ineos Melamines Inc. be responsible for damages of any nature whatsoever resulting from the use of or reliance upon Information or the product to which Information refers. Nothing contained herein is to be construed as a recommendation to use any product, process, equipment or formulation in conflict with any patent, and Ineos Melamines Inc. makes no representation or warranty, express or implied, that the use thereof will not infringe any patent. Certain products may not be regulated or available in some world areas. NO REPRESENTATIONS OR WARRANTIES, EITHER EXPRESS OR IMPLIED, OF MERCHANTABILITY, FITNESS FOR A PARTICULAR PURPOSE OR OF ANY OTHER NATURE ARE MADE HEREUNDER WITH RESPECT TO INFORMATION OR THE PRODUCT TO WHICH INFORMATION REFERS. Where indicated, ® is a Registered Trademark of Ineos Melamines Inc.

Version 04/07 replaces version 01/06