

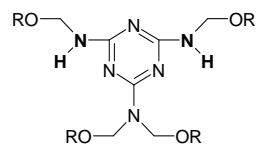
CHARACTERISTICS

Imino type, reactive, n-butylated melamine formaldehyde resin

FORM OF DELIVERY

65% in Xylene/n-Butanol (95:5)

STRUCTURE



SPECIFICATION

Determined per batch

Property

**Viscosity EN ISO 3219-B
Cone plate, DIN 53177 (23°C)** [mPas] 1000-3000

**Non-Volatile Matter / Solids
DIN EN ISO 3251
(1 h; 120 °C; 2 g; IB)** [%] 64-67

**Solvent Tolerance (ASTM-Amine)
(435-1200-25-1)** [ml/g] 2.1 - 4.3

**Solvent Tolerance: Heptane
(DIN EN ISO 11908)** [ml/g] 1,5-3,0

**Acid Number
(031-031)** Mg KOH/g 0.2 max

**Color, APHA
(435-1019)** 30 max.

**Density (Liquids)
(435-1200-30) at 25°C** LB./Gal 8.5-8,7

(DIN 12791 part 1+3) at 25 °C g/ml 1.019-1.043

**Formaldehyde Content (Sulfite)
(DIN EN ISO 11402)** [%] < 0.2

Not continually determined

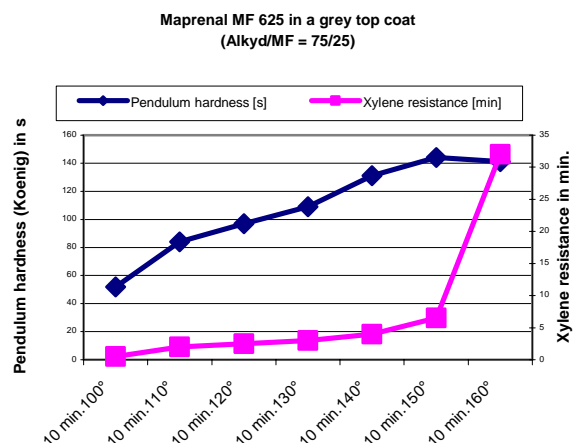
**Flash Point (Pensky Martens, closed cup)
analog, DIN EN 22719** [°F] 64
(18°C)

**Degree of polymerisation, DP
(GPC/PS I)** 3.00

USES :

Maprenal MF 625 is highly compatible with aliphatic and aromatic hydrocarbons, it can be also diluted with alcohols such as butanol and with esters, ethers and ketons. MF 625 is insoluble in water. Application areas include low-medium solids automotive solvent borne, base-, and top coats. Due to its flexibility it is also suitable for general metal and can coating applications.

FILM PROPERTIES:



STORAGE STABILITY:

At temperature up to 25°C the storage stability of Maprenal MF 625 packed in original and closed* containers amounts to at least 12 months. Some turbidity may occur in isolated cases but this has no effect on product quality.

*the solvent (xylene) can evaporate easily out of the open eg drums so that the NV and viscosity changes (increases); to maintain the specs keep the packaging materials closed.

INEOS Melamines

	World Area		Customer Order	Technical Support
INEOS Melamines, Inc. 1395 S. Marietta Parkway Bldg. 500, Suite 210 Marietta, GA 30067	North America	☎ 🖨	+1888 723 2873 +1770 528 6693	+1413 730 2757 +1413 730 3444
	South America	☎ 🖨	+1678 999 3172 +1770 528 6693	+1413 730 2757 +1413 730 3444
	Europe-Africa	☎ 🖨	+49 (0) 69 4109 2319 +49 (0) 69 4109 2552	+49 (0) 69 4109 2310 +49 (0) 69 4109 2628
	Asia Pacific	☎ 🖨	+49 (0) 69 4109 2319 +49 (0) 69 4109 2552	+49 (0) 69 4109 2310 +49 (0) 69 4109 2628
INEOS Melamines GmbH Alt Fechenheim 34 D 60386 Frankfurt, Germany www.ineosmelamines.com				

NOTICE: Although the information and recommendations set forth herein (hereinafter "Information") are presented in good faith and believed to be correct as of the date hereof, Ineos Melamines Inc. (and its subsidiaries) makes no representations or warranties as to the completeness or accuracy thereof. Information is supplied upon the condition that the persons receiving same will make their own determination as to the suitability for their purpose prior to use. In no event will Ineos Melamines Inc. be responsible for damages of any nature whatsoever resulting from the use of or reliance upon Information or the product to which Information refers. Nothing contained herein is to be construed as a recommendation to use any product, process, equipment or formulation in conflict with any patent, and Ineos Melamines Inc. makes no representation or warranty, express or implied, that the use thereof will not infringe any patent. Certain products may not be regulated or available in some world areas. **NO REPRESENTATIONS OR WARRANTIES, EITHER EXPRESS OR IMPLIED, OF MERCHANTABILITY, FITNESS FOR A PARTICULAR PURPOSE OR OF ANY OTHER NATURE ARE MADE HEREUNDER WITH RESPECT TO INFORMATION OR THE PRODUCT TO WHICH INFORMATION REFERS.** Where indicated, ® is a Registered Trademark of Ineos Melamines Inc.

Version 04/07 replaces version 01/06