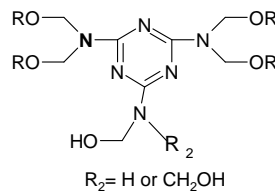


CHARACTERISTICS

Methylol type, highly reactive, isobutylated melamine-formaldehyde resin

STRUCTURE



FORM OF DELIVERY

60 % in iso butanol (60IB)

SPECIFICATION

Determined per batch

Properties

Dynamic Viscosity DIN 53177

Cone & Plate (23°C) [mPa.s] 850 -1550

Non-Volatile Matter DIN EN ISO 3251

(1 h; 120 °C; 2 g) [%] 59 - 61

Compatibility (aliph. hydrocarbon) DIN EN ISO 11908

n-Heptane tolerance at 23°C [ml/g] 2-5

Not continually determined

Iodine Colour Number DIN 6162

< 1

Density (Liquids)

approx at 20°C [g/ml] 1,01

Flash Point (Pensky-Martens)

DIN EN 22719 (analog) [°C] 35

Formaldehyde Content (Sulfite)

DIN EN ISO 11402 [%] < 2,0

Molecular weight distribution

(M_w/M_n) (GPC/PS I) 2,10

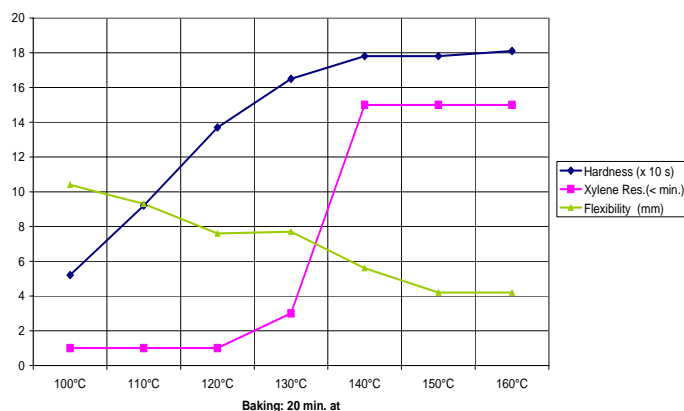
USES:

Maprenal MF 517/60iB provides a high reactivity in combination with a good intercoat adhesion. It shows a good compatibility to hydrocarbons, alcohols, esters, ketones and Celluloseacetobutyrate .

In combination with acrylics and especially polyester resins Maprenal MF 517/60iB can be used for the formulation of can coatings an general baking enamel paints.

FILM PROPERTIES:

Maprenal MF 517 (Clear coat: Ac/MF = 70/30)



STORAGE STABILITY:

At temperatures up to 25 °C storage stability of Maprenal MF 517/60iB packed in original containers amounts to at least 24 months from the date of production..

Some turbidity may occur in isolated cases but this has no effect on product quality.



	World Area		Customer Support	Technical Support
INEOS Melamines, LLC 730B Worcester Street Springfield, MA 01151	North America		+1 888 723 2873	+1 413 730 2499
	South America		+1 413 730 3814	+1 413 730 2499
	Both		+1 413 730 3815 +1 413 730 3817	+1 413 730 2268
INEOS Melamines GmbH Alt Fechenheim 34 D 60386 Frankfurt, Germany	Europa Middle		+49 (0) 69 4109 2319	+49 (0) 69 4109 2310
	East / Africa		+49 (0) 69 4109 2552	+49 (0) 69 4109 2628
www.ineosmelamines.com	Asia / Pacific	 	+86-21-6103 5220 +86-21-6226 5072	+49 (0) 69 4109 2310 +49 (0) 69 4109 2628

NOTICE: Although the information and recommendations set forth herein (hereinafter "Information") are presented in good faith and believed to be correct as of the date hereof, Ineos Melamines (and its subsidiaries) makes no representations or warranties as to the completeness or accuracy thereof. Information is supplied upon the condition that the persons receiving same will make their own determination as to the suitability for their purpose prior to use. In no event will Ineos Melamines be responsible for damages of any nature whatsoever resulting from the use of or reliance upon Information or the product to which Information refers. Nothing contained herein is to be construed as a recommendation to use any information, product, process, equipment or formulation in conflict with any trademark, copyright, patent or other intellectual property right and Ineos Melamines makes no representation or warranty, express or implied, that the use thereof will not infringe any patent. Certain products may not be regulated or available in some world areas. NO REPRESENTATIONS OR WARRANTIES, EITHER EXPRESS OR IMPLIED INCLUDING WITHOUT LIMITATION ANY IMPLIED WARRANTIES OF MERCHANTABILITY, FITNESS FOR A PARTICULAR PURPOSE OR OF ANY OTHER NATURE ARE MADE HEREUNDER WITH RESPECT TO INFORMATION OR THE PRODUCT TO WHICH INFORMATION REFERS. Where indicated, ® is a Registered Trademark of Ineos Melamines.