

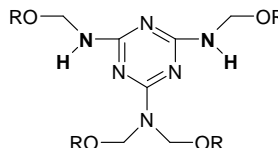
CHARACTERISTICS

Iminotype, high reactive, methylated melamine-formaldehyde resin.

FORM OF DELIVERY

90% in iso-Butanol

STRUCTURE



SPECIFICATION

Determined per batch

Properties

Viscosity DIN EN ISO3219-B

Cone & Plate (23°C) [mPas] 6100-17200

Gardner-Holdt 25°C (435-1200-3) Z2- Z5

Non-Volatile Matter/ Solids DIN EN ISO 3251

1h, 120°C, 2g+2ml l-Butanol [%] 80-85

Foil, 45min at 45°C (435-1200-19) [%] 88-92

Tolerance (Xylenel)

(435-1200-25-9) ml/10g 15.0-27.0

Color, APHA

(435-1019) 30 max.

Haze, APHA

(435-1019) 5 max.

Density (Liquids)

DIN 12791 part 1+3 at 25°C, approx. [g/cm³] 1.161-1.185

(435-1200-30) at 25°C LB./Gal. 9.7-9.9

Formaldehyde Content (Sulfite)

DIN EN ISO 11402 [%] 0.4-0.8

Not continually determined

Molecular weight distribution

(M_w/M_n) (GPC/PS I) 1.40

Flash Point

Pensky Martens (closed cup) [°F] 107

DIN EN 22719 analog [°C] 42

USES:

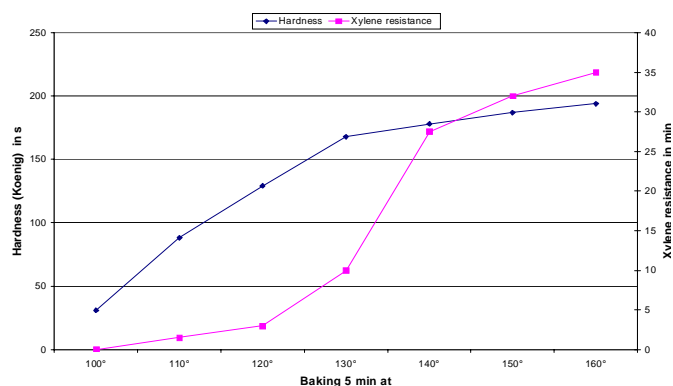
Resimene HM 2608 is a high reactive, high solid melamine formaldehyde resin, which shows a good compatibility to alcohols, esters, ketons and water.

In combination with suitable acrylic, alkyd, epoxy and polyester resins Resimene HM 2608 could be used to formulate solvent and waterborne stoving enamel paints, which can be baked at > 130°C (uncatalysed) if a main binder/MF solid resin ratio is adjusted to 80/20-70/30. Resimene HM 2608 could be used in solvent and waterborne stoving enamels especially waterborne automotive primers, base, clear & top coats. Resimene HM 2608 combines a good cure response with a improved formulation stability, good intercoat adhesion, high overbaking & water resistance especially in waterborne paints.

Reactivity: R 717 > HM 2608 > R 730 > R 735 > 741 > 747

FILM PROPERTIES:

HM 2608 in a SB white top coat



STORAGE STABILITY:

At temperatures up to 25°C storage stability of Resimene HM 2608 packed in original containers amounts to at least 12 months.

Some turbidity may occur in isolated cases but this has no effect on the product quality.



	World Area		Customer Support	Technical Support
INEOS Melamines, LLC 730B Worcester Street Springfield, MA 01151	North America		+1 888 723 2873	+1 413 730 2499
	South America		+1 413 730 3814	+1 413 730 2499
	North & South America		+1 413 730 3815 +1 413 730 3817	+1 413 730 2268
INEOS Melamines GmbH Alt Fechenheim 34 D 60386 Frankfurt, Germany	Europa Middle East / Africa	 	+49 (0) 69 4109 2319 +49 (0) 69 4109 2552	+49 (0) 69 4109 2310 +49 (0) 69 4109 2628
	Asia / Pacific	 	+86-21-6103 5220 +86-21-6226 5072	+49 (0) 69 4109 2310 +49 (0) 69 4109 2628
www.ineosmelamines.com				

NOTICE: Although the information and recommendations set forth herein (hereinafter "Information") are presented in good faith and believed to be correct as of the date hereof, Ineos Melamines (and its subsidiaries) makes no representations or warranties as to the completeness or accuracy thereof. Information is supplied upon the condition that the persons receiving same will make their own determination as to the suitability for their purpose prior to use. In no event will Ineos Melamines be responsible for damages of any nature whatsoever resulting from the use of or reliance upon Information or the product to which Information refers. Nothing contained herein is to be construed as a recommendation to use any information, product, process, equipment or formulation in conflict with any trademark, copyright, patent or other intellectual property right and Ineos Melamines makes no representation or warranty, express or implied, that the use thereof will not infringe any patent. Certain products may not be regulated or available in some world areas. NO REPRESENTATIONS OR WARRANTIES, EITHER EXPRESS OR IMPLIED INCLUDING WITHOUT LIMITATION ANY IMPLIED WARRANTIES OF MERCHANTABILITY, FITNESS FOR A PARTICULAR PURPOSE OR OF ANY OTHER NATURE ARE MADE HEREUNDER WITH RESPECT TO INFORMATION OR THE PRODUCT TO WHICH INFORMATION REFERS. Where indicated, ® is a Registered Trademark of Ineos Melamines.