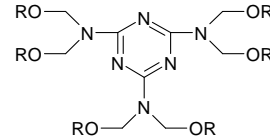


CHARACTERISTICS

Styrene allyl alcohol modified Hexamethoxymethylmelamine formaldehyde

FORM OF DELIVERY

85% in Ethanol

STRUCTURE**SPECIFICATION**

Determined per batch

Properties**Viscosity DIN EN ISO3219-B**

Gardner-Holdt 25°C
(435-1200-3)

W - Z1

Non-Volatile Matter

Foil, 45 min. @ 45°C
(435-1200-19)

[%] 83-87

Color, APHA

(435-1019)

100 max.

Haze, APHA

(435-1019)

20 max.

Density (Liquids)

(435-1200-30) at 25°C

LB./Gal. 8.95-9.25

Formaldehyde Content (Sulfite)

DIN EN ISO 11402

[%] 0.15 max.

Not continually determined

Flash Point (Pensky Martens, closed cup)

DIN EN 22719 (analog.)=

[°F] 60
(15°C)

USES:

Resimene 2040 is a highly reactive styrene allyl alcohol modified methylated melamine-formaldehyde crosslinking resin. Compared to conventional cross-linkers, Resimene 2040 helps impart lower temperature and faster catalyzed cure response, and improved coating performance. Resimene 2040 is used primarily for wood furniture and kitchen cabinet coatings and for general metal coatings. Resimene 2040 may be modified with other resins such as nitrocellulose and rosin esters for specific end use requirements. It may also be employed to increase the solids and performance of nitrocellulose coatings. Resimene 2040 is not recommended for usage in water-borne systems since high levels of co-solvent are required to achieve water-reducibility.

STORAGE STABILITY:

At temperatures up to 25°C the storage stability of Resimene 2040 packed in original containers amounts to at least 24 months. Some turbidity may occur in isolated cases but this has no effect on product quality.



	World Area		Customer Support	Technical Support
INEOS Melamines, LLC 730B Worcester Street Springfield, MA 01151	North America		+1 888 723 2873	+1 413 730 2499
	South America		+1 413 730 3814	+1 413 730 2499
	North & South America		+1 413 730 3815 +1 413 730 3817	+1 413 730 2268
INEOS Melamines GmbH Alt Fechenheim 34 D 60386 Frankfurt, Germany	Europa Middle East / Africa	 	+49 (0) 69 4109 2319 +49 (0) 69 4109 2552	+49 (0) 69 4109 2310 +49 (0) 69 4109 2628
	www.ineosmelamines.com	Asia / Pacific	 	+86-21-6103 5220 +86-21-6226 5072

NOTICE: Although the information and recommendations set forth herein (hereinafter "Information") are presented in good faith and believed to be correct as of the date hereof, Ineos Melamines (and its subsidiaries) makes no representations or warranties as to the completeness or accuracy thereof. Information is supplied upon the condition that the persons receiving same will make their own determination as to the suitability for their purpose prior to use. In no event will Ineos Melamines be responsible for damages of any nature whatsoever resulting from the use of or reliance upon Information or the product to which Information refers. Nothing contained herein is to be construed as a recommendation to use any information, product, process, equipment or formulation in conflict with any trademark, copyright, patent or other intellectual property right and Ineos Melamines makes no representation or warranty, express or implied, that the use thereof will not infringe any patent. Certain products may not be regulated or available in some world areas. NO REPRESENTATIONS OR WARRANTIES, EITHER EXPRESS OR IMPLIED INCLUDING WITHOUT LIMITATION ANY IMPLIED WARRANTIES OF MERCHANTABILITY, FITNESS FOR A PARTICULAR PURPOSE OR OF ANY OTHER NATURE ARE MADE HEREUNDER WITH RESPECT TO INFORMATION OR THE PRODUCT TO WHICH INFORMATION REFERS. Where indicated, ® is a Registered Trademark of Ineos Melamines.